

# Mosaico L

300W IP66 zoomable LED image projector with an animation wheel and framing shutters

ORDER CODE: **MOSAICOL**



The **Mosaico L** is a bright outdoor LED image projector, designed for long-range image, textures and logo projections. Built in a durable IP66 die-cast housing, the **Mosaico L** offers a phenomenal output of 11,700 lumens and an extensive set of features including a rotating animation wheel, 7 interchangeable gobos, and motorized framing shutters that precisely focus within a certain projection area. It has an exceptional zoom range, from 7° to 49°, making it versatile in both near-field and long-throw installations, or even for static and animated facade building lighting.

## MAIN FEATURES

- IP66 for long-lasting installations, with minimal maintenance needed
- 7° - 49° linear zoom system, for both near and long throw installation
- 300W White LED engine (8,000K), with up to 11'700 lumen output
- Extensive feature set including 7 colour-filters on wheel, 7 interchangeable rotating gobos, animation wheel and motorized framing shutters

## TECHNICAL SPECIFICATION

### LIGHT SOURCE

- Source: 300 W high-power white LED
- CCT: 8.000
- Luminous flux: (7°) 8'536 lm - (49°) 11'729 @full
- Lux: (7°) 28'230 lx - (49°) 867 lx @5 m full
- Source life expectancy: > 30.000 hrs (L70B10 @Ta 25° C / 77° F)

### OPTICS

- Zoom: 7° - 49° motorised linear zoom
- Lens diameter: 110 mm
- Lens type: HD anti-reflection lenses with achromatic coating
- Focus: motorised

### COLOUR SYSTEM

- Colour mixing: cold white LED with colour wheel
- Colour wheel: open + 7 colour filters

### DYNAMIC EFFECTS

- Control Resolution: 16-bit dimmer
- Shutter system: 4 shutter blades with position and ±30° angle adjustment, ±45° rotation of the complete framing system
- Animation wheel: magnetic interchangeable animation wheel with CW and CCW rotation
- Rotating gobos: open + 7 rotating gobos + open, interchangeable, indexing
- Gobo size (BW): outer: 26,9 mm - image: 23 mm
- Gobo size (Color): outer: 26,9 mm - image: 20,5 mm
- FX generator: shutter macros with adjustable speed
- Circular prism: 3f f with bi-directional rotation, indexing
- Frost: linear 0 - 100% frost filter
- Special features: record scenes and create chases and shows throughout these scenes

### BODY

- Body: weatherproof IP66 construction
- Body colour: RAL 9006
- Other: inspectable cover window for gobos replacement and maintenance

## ACCESSORIES & RELATED PRODUCTS

- |              |   |
|--------------|---|
| ▪ C6002B     | Slim aluminum clamp, 200kg loading, 48-51mm tubes, M10 bolt, Black                  |
| ▪ RSR1235B   | Steel security cable for hanging bodies, inox steel shackle, L=120 cm, black        |
| ▪ WSBBF1G5   | BlackBox F-1 G5 transmitter, 2,45GHz & 5.2/5,8 GHz, DMX/RDM, 512Ch                  |
| ▪ WSBBF1G6   | BlackBox F-1 G6 transrec, 512ch, 2,45GHz, DMX&RDM, Bluetooth, G3, G4, G4S, G5, CRMX |
| ▪ WSBBR512G5 | BlackBox R-512 G5 receiver 512Ch, 2,45GHz & 5.8GHz, DMX/RDM optional                |

### CONTROL

- Protocols: DMX512, RDM, W-DMX
- Stand Alone: Stand Alone programmer and playback
- DMX channels: 22 / 32 / 43 channel
- Wireless Control: included, LumenRadio Timo Fx DMX/RDM compatible with both CRMX (Lumen Radio) and W-DMX (Wireless DMX)
- RDM: RDM for remote monitoring and settings
- Display: Graphic User Interface
- Firmware upgrade: yes, via USB - DMX interface (UPBOXPRO/UPBOX1) not included

### ELECTRONICS

- Dimmer: linear 0 ~ 100% electronic dimmer
- Dimmer curves: 4 selectable dimming modes available
- Strobe / shutter: 1~30 Hz, electronic
- Display battery: self-charging battery backup
- Operating temperature: -20° C / +45° C (-4° F / +113° F)
- LED Control: flicker free frequency with adjustable PWM
- Selectable PWM: 600 ~ 25.000 Hz

### ELECTRICAL

- Mains power supply: 100-240V - 50/60Hz
- Max power consumption: 440 W
- Standby power: 57 W
- Output (at 230V): 6 units on a single power line
- Power factor: > 0,98
- Inrush current: 230VAC/22A

### PHYSICAL

- IP rating: 66 for outdoor installations
- IK rating: 09
- Cooling: combination of heat pipe cooling system and low noise fan
- Suspension and fixing: bracket for hanging and positioning
- Adaptors: XLR and BARE END 16A adaptors included
- Signal connection: 1,8 m moulded IP signal IN/OUT connectors
- Data connection: W-DMX transceiver
- Power connection: 1,8 m moulded IP power IN/OUT connectors
- Dimensions (WxHxD): 362x428x451 mm
- Weight: 25 kg

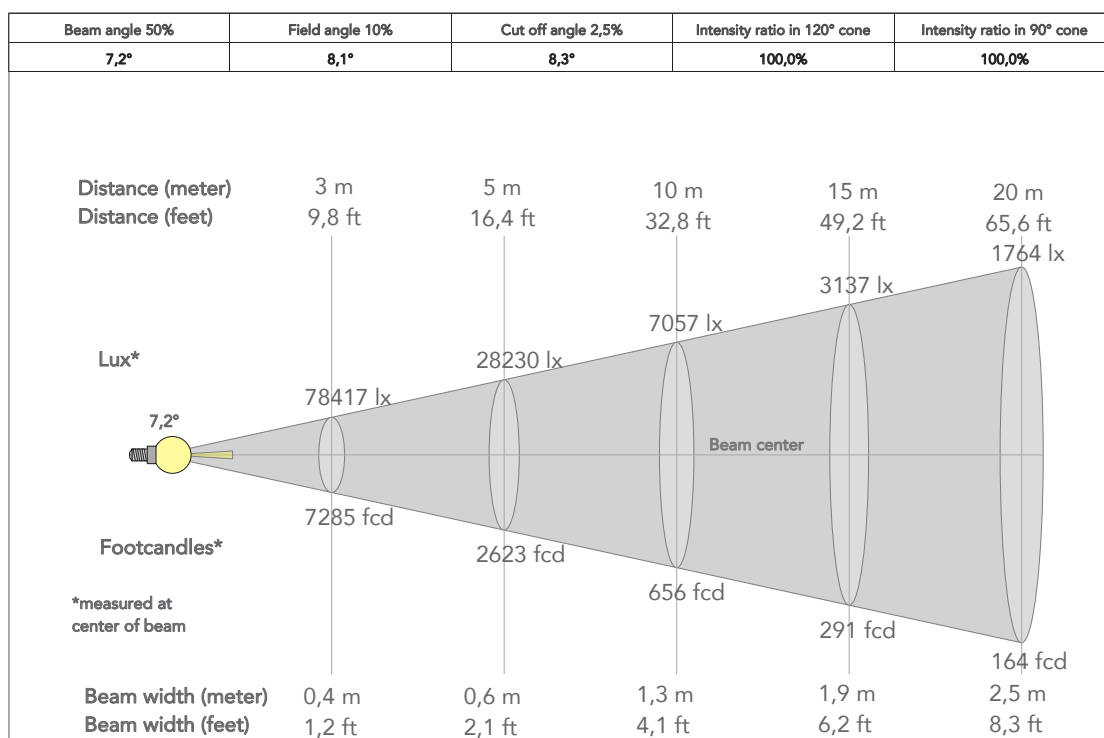
## CERTIFICATIONS / APPROVALS

- Certifications / Approvals: CE, UKCA, RCM, cTUVus, FCC

- |                       |  |
|-----------------------|--|
| ▪ WSBBR512G6          | BlackBox R-512 G6 receiver 512Ch, 2,45GHz, DMX&RDM, Bluetooth, G3, G4, G4S, G5, CRMX |
| ▪ MOSUNIBRACKXL       | Bracket for MOSAICOL for wall mounting and suspension on poles                       |
| ▪ AWEXAC1L03/05/10/20 | IP67 power extension cable for outdoor architectural projectors, L.03/05/10/20 m     |
| ▪ AWEXDC1L03/05/10/20 | IP67 DMX extension cable for outdoor architectural projectors, L.03/05/10/20 m       |
| ▪ UPBOX1U             | Firmware uploader kit, USB IN, 3pin XLR DMX OUT, USB OUT                             |

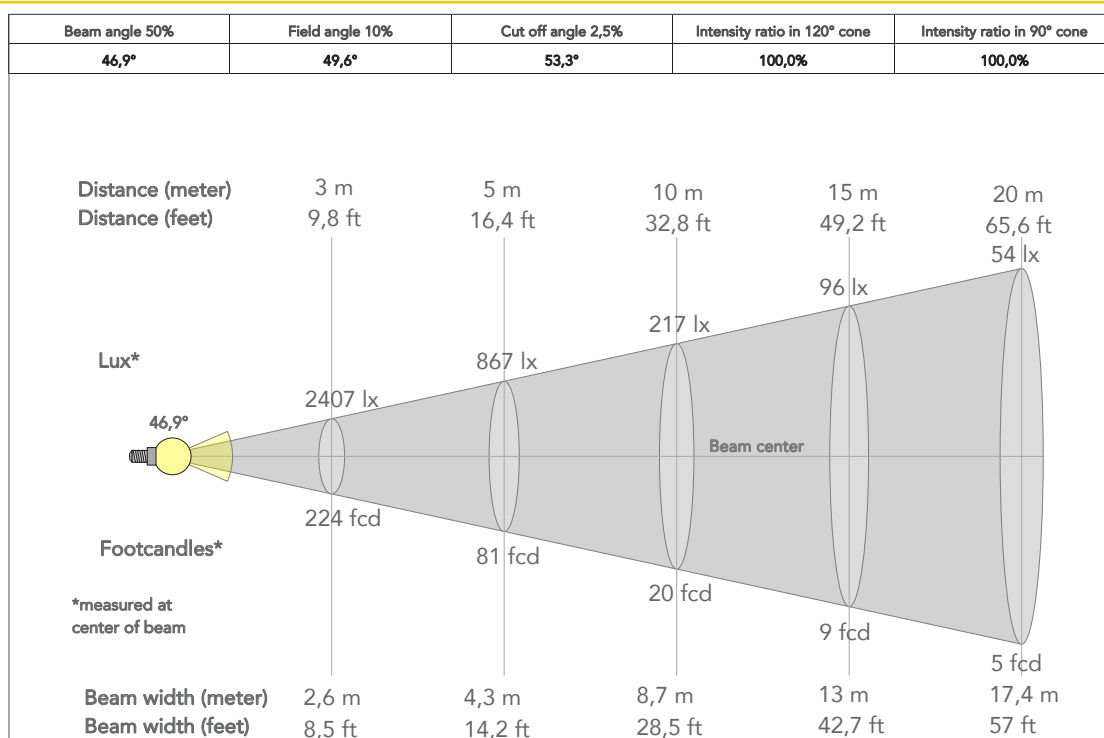
## PRESET FULL ON

Beam angle 50%: 7°

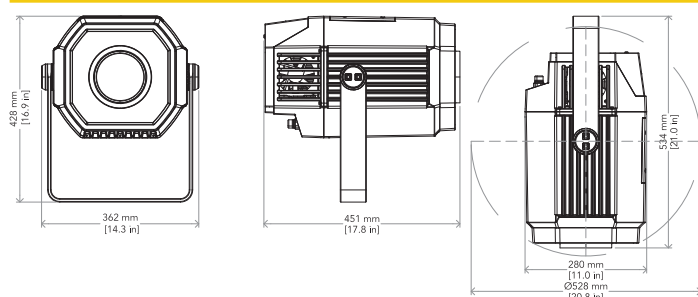


## PRESET FULL ON

Beam angle 50%: 50°



## TECHICAL DRAWINGS



## CERTIFICATIONS / APPROVALS



Conforms to UL STD. 1573  
Certified to CSA STD: C22.2 NO. 166

Visit our website  
for specifications and  
tech documentations

