

LumiPix XB050

IP65 RGB+WW pixel-controlled linear LED fixture

ORDER CODE: **LUMIPIXXB050**



The **LumiPix XB** is a family of IP65 high power and high quality linear luminaire, designed to meet advanced requirements from Film, Tv and Staging professionals. The units are available in 100 cm (18 pixels) and 50 cm (9 pixels) and designed around a 20W RGB + Warm White LED source, delivering a bright 10° narrow beam angle but still keeping smooth colour mixing, high CRI and TM30, and calibration down to pixel. **LumiPix XB** can be completed by a wide range of optical modifiers such as optional lenses, holographic filters, eggcrates and barndoors, performing with extreme precision for the desired application. The design of the housing has been conceived to allow fast mounting and deploying of optical accessory through a quick-lock system. These units have been designed to offer multiple choice of control like DMX/RDM, Ethernet and Wireless DMX (CRMX and W-DMX), sharing the same user settings and advanced software features of all Spektra calibrated fixtures.

MAIN FEATURES

- IP65, pixel-controlled LED linear fixture, available in 18 pixels and 9 pixels
- 20W RGB+WW led source, delivering high CRI (>90), advanced colour control and effects generator
- DMX/RDM control, Ethernet, and Wireless DMX (CRMX + W-DMX)

TECHNICAL SPECIFICATION

LIGHT SOURCE

- Source: 9x20 W RGB + Warm White LED
- Luminous flux: 3'889 lm @full
- Lux: 11'687 lx @3 m
- Lux: 4'207 lx @5 m
- CRI: >94 @3'200 K ; >96 @5'600 K
- R9: >91 @3'200 K ; >90 @5600 K
- Source life expectancy: > 50.000 h

OPTICS

- Beam angle: 10 °
- Field angle: 18 °
- Lens type: different optics available
- Additional optics: several filters available

COLOUR SYSTEM

- Colour mixing: RGB + Warm White
- CCT: CCT control, + / - green correction, tungsten emulation
- White presets: 2.800 K - 10.000 K with 28 K resolution
- Colour wheel: virtual colour wheel with macros

DYNAMIC EFFECTS

- Control Resolution: 16-bit dimmer, colours
- Pixel patterns: pre-programmed pixel macros and cinema lighting effects patterns
- Special features: linear crossfade channel from any white to any colour; virtual CTO on colours

BODY

- Body: aluminium body
- Body colour: black

CONTROL

- Protocols: DMX512, RDM, ArtNet, sACN, W-DMX + CRMX
- Pixel control: 9 pixel2pixel control
- Wireless Control: included, LumenRadio Timo Fx DMX/RDM compatible with both CRMX (Lumen Radio) and W-DMX (Wireless DMX)

ACCESSORIES & RELATED PRODUCTS

- | | |
|------------------------|-------------------------------------------------------------------------------------|
| ▪ FCLLUMIPIXXB | Flight case for 4 pcs LUMIPIXXB100 or 8 pcs LUMIPIXXB050 |
| ▪ LPXB050BD | Barndoor to adjust the light beam for LUMIPIXXB050 |
| ▪ LPXB050EC60 | Egg crate for LUMIPIXXB050 |
| ▪ LPXB050FILT 20/40/60 | Light diffusion filter for LUMIPIXXB050, 20°/40°/60° |
| ▪ C6002B | Slim aluminum clamp, 200kg loading, 48-51mm tubes, M10 bolt, Black |
| ▪ OS27 | Quick-Lock omega bracket, M10 hole |
| ▪ WSBBR512G5 | BlackBox R-512 G5 receiver 512Ch, 2.45GHz & 5.8GHz, DMX/RDM optional |
| ▪ WSBBF1G6 | BlackBox F-1 G6 transrec, 512ch, 2.45GHz, DMX&RDM, Bluetooth, G3, G4, G4S, G5, CRMX |

- RDM: RDM for remote monitoring and settings
- Display: Graphic User Interface
- Firmware upgrade: yes, via USB - DMX interface (UPBOX1) not included
- Master/Slave: for synchronised operation of more units linked in a chain

ELECTRONICS

- Dimmer: linear 0 ~ 100% electronic dimmer
- Dimmer curves: selectable dimming modes available
- Strobe / shutter: 1 - 30 Hz, electronic
- Display battery: self-charging battery backup
- Operating temperature: -20° ~ +45°
- LED Control: flicker free frequency with adjustable PWM
- Selectable PWM: 600 ~ 40.000 Hz

ELECTRICAL

- Mains power supply: 100-240V - 50/60Hz
- Max power consumption: 150 W
- Output (at 230V): 13
- Power factor: >0,94

PHYSICAL

- IP rating: 65 for temporary outdoor use (*)
- Cooling: active, silent operation
- Suspension and fixing: hanging bracket for floor stand. Also can fit the fast quick lock OMEGA bracket
- Signal connection: Amphenol XLR 5p IN/OUT connectors
- Data connection: Seetronic Ethernet IP in/out connectors
- Power connection: Seetronic powerCON TRUE IP65 IN/OUT
- Dimensions (WxHxD): 515x185x150 mm
- Weight: 3,8 kg
- (*) NOTE: Suitable for permanent outdoor use, provided installation and maintenance cycles by qualified technicians are carried.

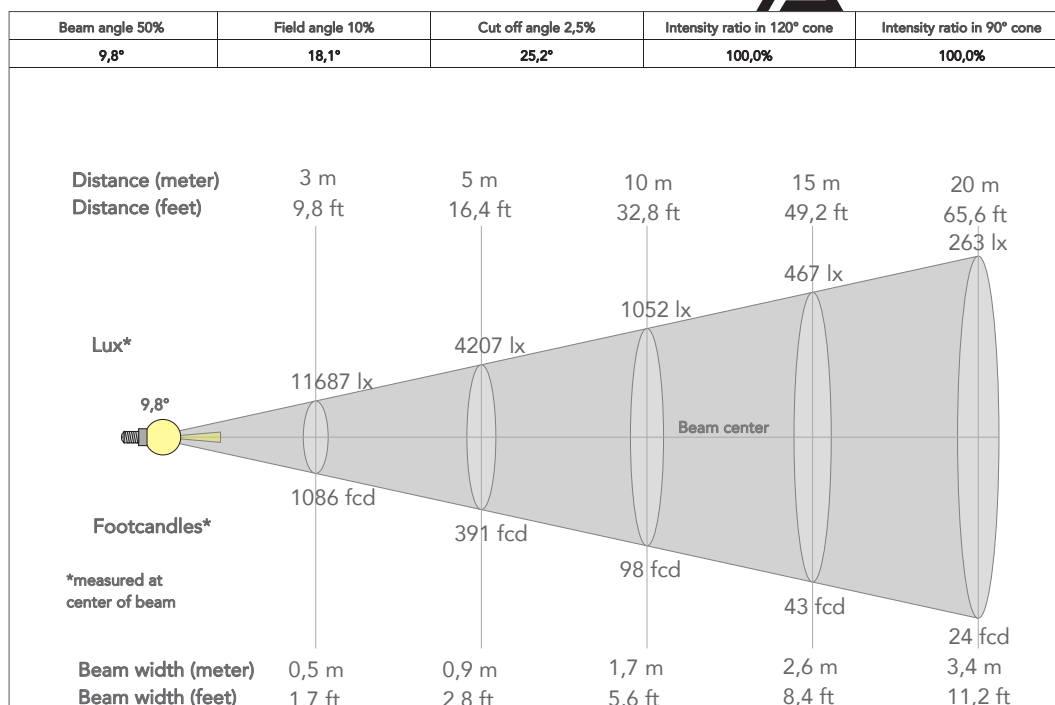
CERTIFICATIONS / APPROVALS

- Certifications / Approvals: CE, UKCA, RCM, cTUVus, FCC

- | | |
|----------------|----------------------------------------------------------------------------------------|
| ▪ WSBBF1G5 | BlackBox F-1 G5 transmitter, 2,45GHz & 5.2/5,8 GHz, DMX/RDM, 512Ch |
| ▪ TOUR53415L03 | Dmx cable HC5340. CANC5MXX XLR 5p->CANC5FXW XLR (f) 5p, L3m |
| ▪ 958225L03 | 3x2.5mm TH07. Cable, 16A 3p PwCon MXW, 16A 3p PwCon FXW, L 3m |
| ▪ 9513FXWL03 | Ass. 3x2.5mm TH07 cable, 16A 3p 230V CEE plug, MENAC3FXW socket |
| ▪ 9533FXWL03 | Ass. 3x2.5mm TH07 cable, SHUKO plug, MENAC3FXW socket |
| ▪ RSR0630B | Steel security cable for hanging bodies, inox steel shackle, L=60 cm, black |
| ▪ TOUR53413L03 | Dmx cable HC5340. CANC3MXX XLR 3p->CANC3FXW XLR (f) 3p, L3m |
| ▪ WSBBR512G6 | BlackBox R-512 G6 receiver 512Ch, 2.45GHz, DMX&RDM, Bluetooth h, G3, G4, G4S, G5, CRMX |
| ▪ UPBOX1UP5 | Firmware uploader kit, USB IN, 5pin XLR DMX OUT, USB OUT |

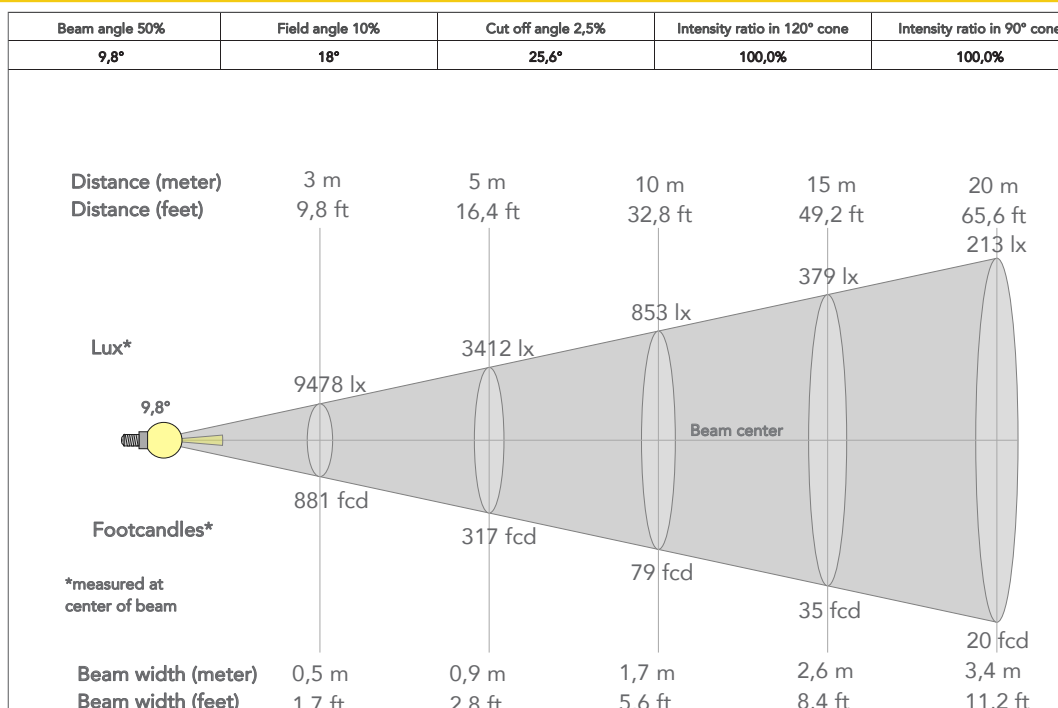
PRESET FULL ON

Beam angle 50%: Native

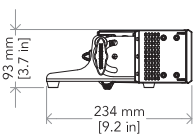
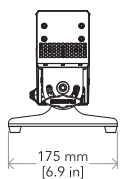
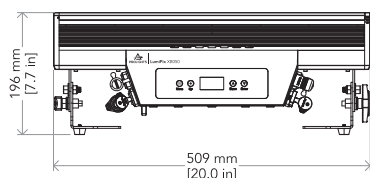


PRESET 5,600 K

Beam angle 50%: Native



TECHNICAL DRAWINGS



CERTIFICATIONS / APPROVALS



Conforms to UL STD. 1573
Certified to CSA STD: C22.2 NO. 166

Visit our website
for specifications and
tech documentations

