

EclFresnel 2KPTW

LED Fresnel pole operated FC and Tunable White with colour correction, to replace 2.000W lamp



EclFresnel 2KPTW is an advanced LED replacement of traditional 2K Fresnel lamps. Offering 6 colour mixing, delivering high precision reproduction of the white spectrum from 2.800 K to 10.000 K with high CRI and extensive colour reproduction. The optical system harnesses the power of a 500W custom LED with 6 colours to create an even projection, beautiful colours and precise whites, with the option to apply +/- green and magenta correction to match other light sources. Featuring HD dimming and tuning from 2.800 K to 10.000 K, the **EclFresnel 2KPTW** delivers both on performance and quality of output that is demanded from this level of light.

MAIN FEATURES

- Tunable white 2.800 K - 10.000 K with high CRI and extensive colour mixing
- +/- green and magenta white tuning
- Truly silent operation making it perfect for studio and stage use

VERSIONS

Code	Housing
ECLFR2KPTW	Black
ECLFR2KPTWWH	White

TECHNICAL SPECIFICATION

LIGHT SOURCE

- Source: 500 W 6 colour custom LEDs source (red, orange, green, royal blue, blue, lime)
- CCT: 2.800 K - 10.000 K
- Luminous flux: (17°) 10'100 lm - (52°) 13'400 lm @full
- Lux: (17°) 3'864 lx - (52°) 710 lx @5 m full
- CRI: 89 @3.200 K; 90,7 @5.600 K
- R9: 80 @3.200 K; 85,4 @5.600 K
- TLCI: 87 @5.600 K
- TM30 Rf: 89,4 @3.200 K; 86,2 @5.600 K
- TM30 Rg: 101,6 @3.200 K; 102,1 @5.600 K
- Source life expectancy: > 70.000 h

OPTICS

- Zoom: 17° - 76 ° half peak angle
- Lens diameter: 250 mm
- Lens type: fresnel zoom lens
- Other: spigot, barndoor and gel frame included

COLOUR SYSTEM

- Colour mixing: 6 colour custom LEDs source (red, orange, green, royal blue, blue, lime)
- CCT: CCT control, + / - green correction, tungsten emulation
- White presets: 2.800 K - 10.000 K
- Colour wheel: virtual colour wheel with macros
- Macros: several pre-built macros with adjustable speed

DYNAMIC EFFECTS

- Static mode: selection of static colour
- Manual mode: manual adjustment of intensity, CT, colour correction from knob
- Auto mode: built-in programs with execution speed adjustment
- Special features: linear crossfade channel from any white to any colour; virtual CTO on colours

BODY

- Hardware on-board: filter frame, 8 doors barndoor, spigot
- Pan angle: 360 ° with manual regulation
- Tilt angle: 180 ° with manual regulation
- Body: sturdy die-cast aluminium body

ACCESSORIES & RELATED PRODUCTS

▪ 9513FXWL03	Ass. 3x2.5mm TH07 cable, 16A 3p 230V CEE plug, MENAC3FXW socket, L.3 m
▪ 9533FXWL03	Ass. 3x2.5mm TH07 cable, SHUKO plug, MENAC3FXW socket, L.3m
▪ 958225L03	3x2.5mm TH07 Cable, 16A 3p PwCon MXW, 16A 3p PwCon FXW, L. 3m
▪ C6002B	Slim aluminum clamp, 200kg loading, 48-51mm tubes, M10 bolt, Black
▪ C6040B	Aluminum clamp for 28mm spigot, 200kg load, 48-51mm tubes, black

- Body colour: black, white finishing available
- Other: Spigot 28 mm

CONTROL

- Protocols: DMX512, RDM, rotatory knob
- DMX channels: 1 / 2 / 5 - 1 / 5 - 2 / 7 - 1 / 7 - 2 / 8 / 9 / 12 / 13 / 16 / 19 / 21 channel
- RDM: RDM for remote monitoring and settings
- Display: Graphic User Interface
- Firmware upgrade: yes, via USB - DMX interface (UPBOX1) not included
- Master/Slave: for synchronised operation of more units linked in a chain
- Other: 16bit control of dimmer and colour

ELECTRONICS

- Dimmer: linear 0 ~ 100% electronic dimmer
- Dimmer curves: 4 selectable dimming modes available
- Strobe / shutter: 1 - 30 Hz, electronic
- Operating temperature: -10° ~ +45°
- LED Control: flicker free frequency with adjustable PWM
- Selectable PWM: 600 ~ 25.000 Hz

ELECTRICAL

- Mains power supply: 100-240V - 50/60Hz
- Max power consumption: 400 W
- Output (at 230V): 5 units on a single power line
- Power factor: >0,93

PHYSICAL

- IP rating: 20
- Cooling: combination of heat pipe cooling system and low noise fan
- Suspension and fixing: bracket for hanging and positioning
- Signal connection: Amphenol XLR 5p IN/OUT connectors
- Power connection: Neutrik powerCON TRUE1 IN/OUT connectors
- Dimensions (WxHxD): 401x576x456 mm
- Weight: 18 kg

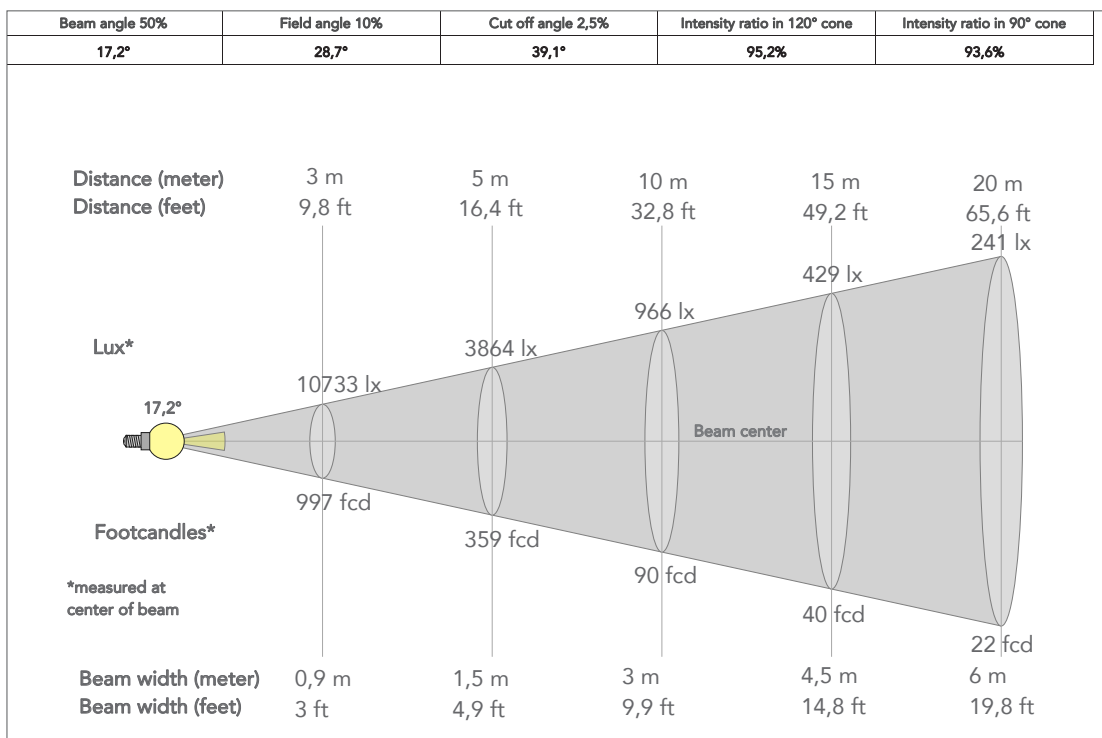
CERTIFICATIONS / APPROVALS

- Certifications / Approvals: CE, UKCA, RCM

▪ ECLFR2KBD	Barn door with directional flaps to adjust the light beam
▪ ECLFR2KTPG	Gel filter frame for ECLFR2K projectors
▪ ECLFRSPG	Spigot for PROLIGHTS Fresnel series
▪ RSR0630B	Steel security cable for hanging bodies, inox steel shackle, L=60 cm, black
▪ TOUR53415L03	Dmx cable HC5340. CANS5MXX XLR 5p->CANS5FXX XLR (f) 5p, L.3m
▪ UPBOX1U	Firmware uploader kit, USB IN, 3pin XLR DMX OUT, USB OUT

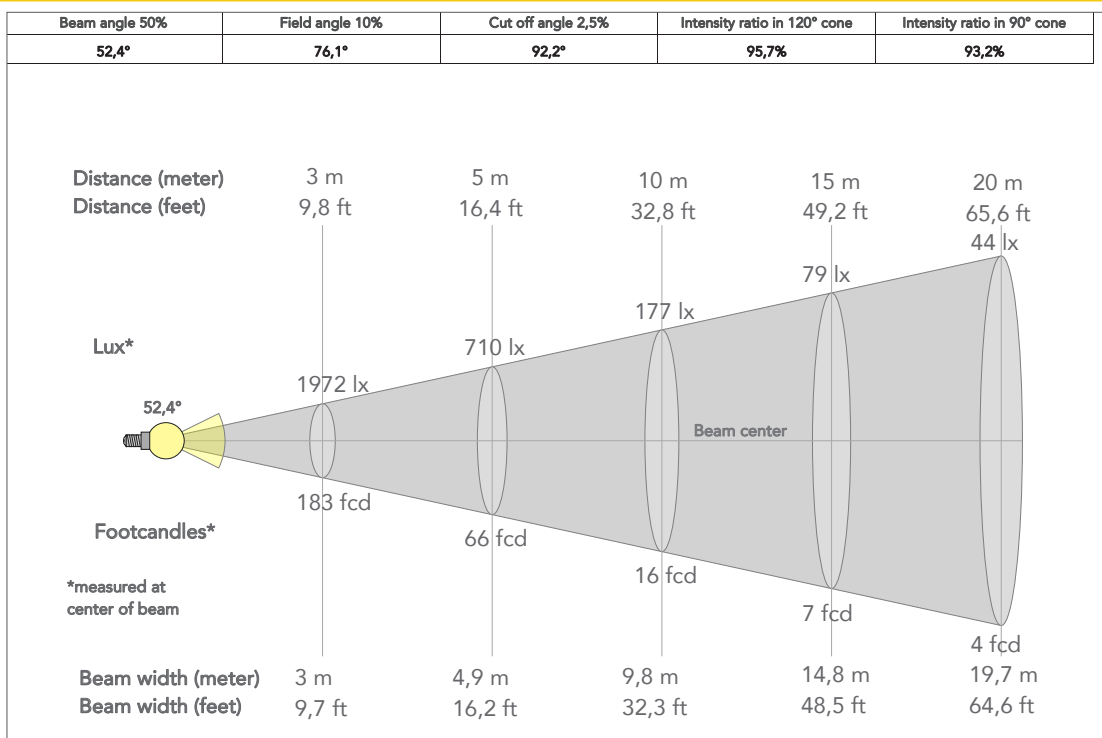
PRESET FULL ON

Beam angle 50%: 17°

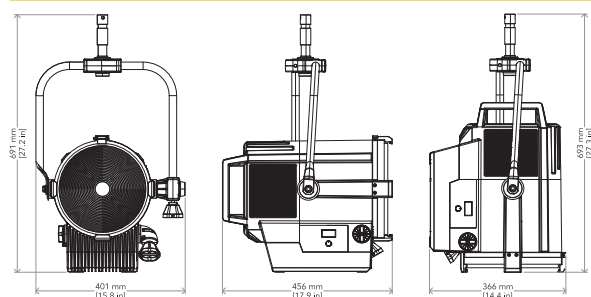


PRESET FULL ON

Beam angle 50%: 52°



TECHICAL DRAWINGS



CERTIFICATIONS / APPROVALS



Visit our website
for specifications and
tech documentations